



འབྲུག་གློག་མེ་ལས་འཛིན།

Bhutan Power Corporation Limited
Registered Office, Thimphu
Procurement Services Department
Thimphu: Bhutan



BPC/PSD/2018 materials/2017/15 /568

August 28, 2017

.....
.....

Subject: Addendum No. 3

Reference: Tender No: BPC/PSD/2018 materials/2017/15 dated 29th July, 2017

Dear Sir(s),

This is with reference to above-mentioned tender whereby PSD, BPC would like to issue the addendum No. 3 as given below.

The material for Steel tubular pole under lot 2 (Poles) shall be Mild Steel (MS) instead of Galvanized Steel. The drawing and Guaranteed Technical Particular (GTP) for MS steel tubular pole is attached as annexure 1& 2.

Therefore, the intending bidders are advised to note the changes and, due to the above inclusion and additional information, the time extension shall be granted and the new submission date and time is 7th September, 2017 at 15:00 hours from initial deadline of 31st August, 2017. **However, the deadline for registration of the tender shall be till 15:00 hours on 31st August, 2017.**

Please acknowledge the receipt of this Addendum No. 3.

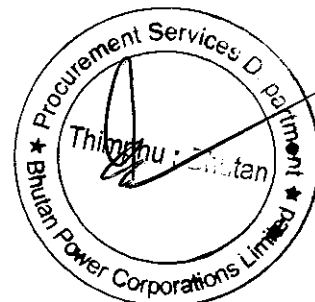
Thanking You.

Yours Sincerely,


(Drukchu Dorji)
General Manager

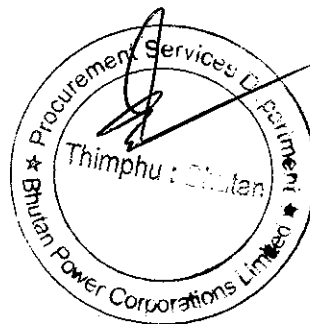
Guaranteed Technical Particular (GTP)**Item: Steel tubular Pole (7.5 M)**

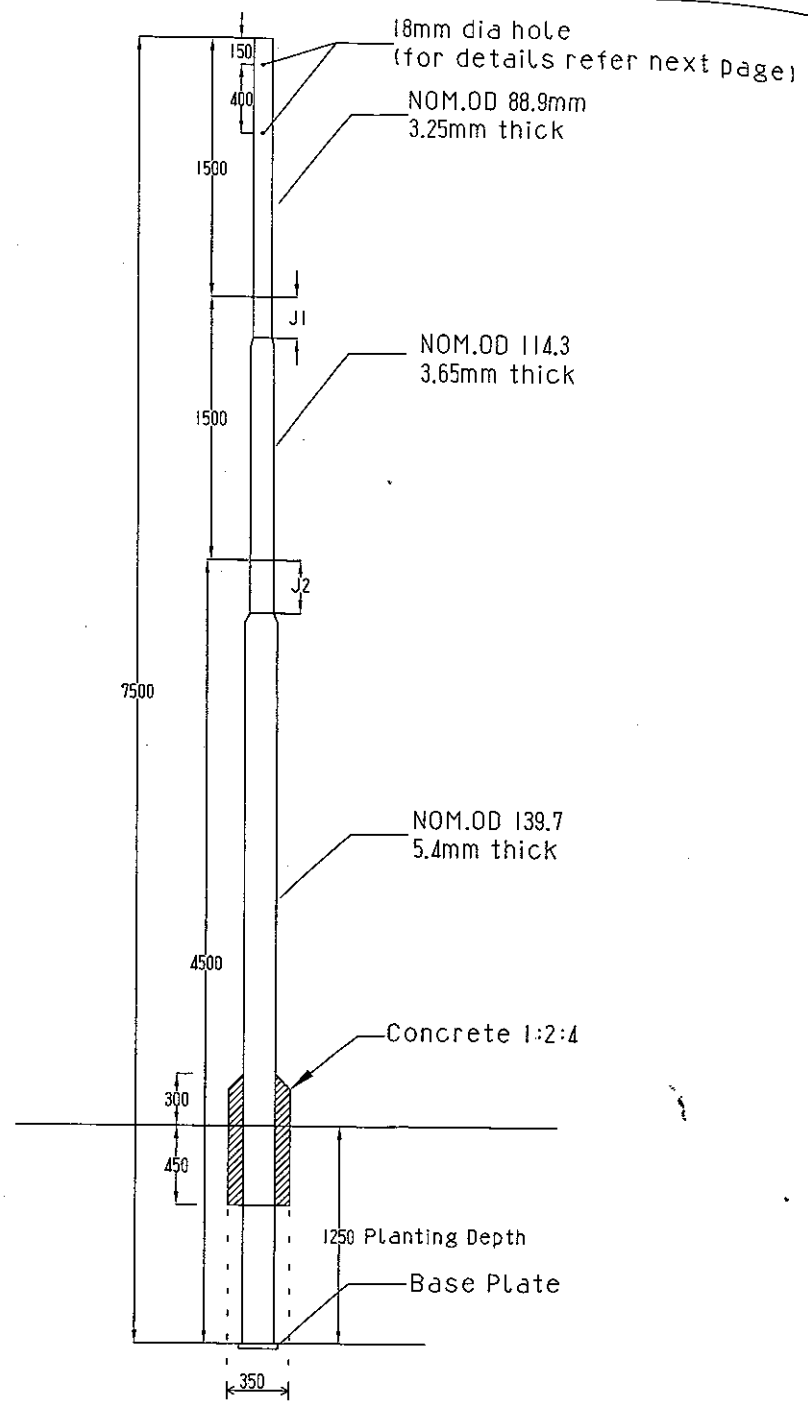
Sl.No.	Description	Unit	Specification
1	Applicable Standard		
2	Manufacturer		
3	Type		
4	Designation		
5	Overall Length	Mtr.	
6	Planting Depth	Mtr.	
7	Height above ground	Mtr.	
8	Length of section		
	Top (H1) in mtr.	Mtr.	
	Middle (H2) mtr.	Mtr.	
	Bottom (H3) mtr.	Mtr.	
9	Outside diameter and thickness of sections		
	I. Top (H1) in mm	mm	
	II. Middle (H2) in mm	mm	
	III. Joint (J1) (Top)	mm	
	IV. Joint (J2) (Top)	mm	
10	Approximate weight of the pole based on the assumption that steel weight 7.859/cm ³	Kg	
11	Breaking Load	N	
12	Crippling Load	N	
13	Working load at factory of safety 2 & 2.5 on crippling load and breaking load	N	
14	Load for permanent set not exceeding 13 mm	N	
15	Load for permanent deflection of 157.5 mm	N	



Guaranteed Technical Particulars**Item Description: Steel tubular Pole (7.5 M)**


Sl.No.	Description	Unit	BPC Requirement
1	Applicable Standard		IS 2613; IS 2063
2	Manufacturer		
3	Type		
4	Designation		
5	Overall Length	Mtr.	7.5
6	Planting Depth	Mtr.	1.25
7	Height above ground	Mtr.	6.25
8	Length of section		
	Top (H1) in mtr.	Mtr.	1.5
	Middle (H2) mtr.	Mtr.	1.5
	Bottom (H3) mtr	Mtr.	4.5
9	Outside diameter and thickness of sections		
	I. Top (H1) in mm	mm	88.9 x 3.25
	II. Middle (H2) in mm	mm	114.3 x 3.65
	III. Joint (J1) (Top)	mm	139.7 x 5.4
	IV. Joint (J2) (Top)	mm	300
10	Approximate weight of the pole based on the assumption that steel weight 7.859/cm ³	Kg	110
11	Breaking Load	N	5100
12	Crippling Load	N	3260
13	Working load at factory of safety 2 & 2.5 on crippling load and breaking load	N	1810 & 2040
14	Load for permanent set not exceeding 13 mm	N	2480
15	Load for permanent deflection of 157.5 mm	N	1600





NOTES

1. DIMENSIONS AS SHOWN ARE IN MM.
2. SPECIFICATIONS AS PER IS:2713 (PART I TO III : 1980)
3. POLE TOP CAP -M.S. PLATE WOULD BE TAG WELDED TO THE POLE

	BHUTAN POWER CORPORATION LIMITED		ENGINEERING DESIGN & CONTRACTS DEPARTMENT
			DISTRIBUTION DESIGN & CONSTRUCTION STANDARD
			7.5 METERS SWAGED POLE ASSEMBLY
DESIGNED BY	NAME	DATE	DRAWING NO. BPC -DDCS -2015 REVISION 2015
CHECKED BY			
APPROVED BY			

