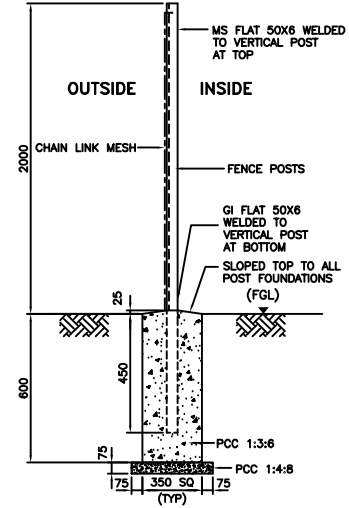


TYPICAL EXTERNAL ELEVATION AT CORNER POST

TYPICAL EXTERNAL ELEVATION AT STRAINER POST

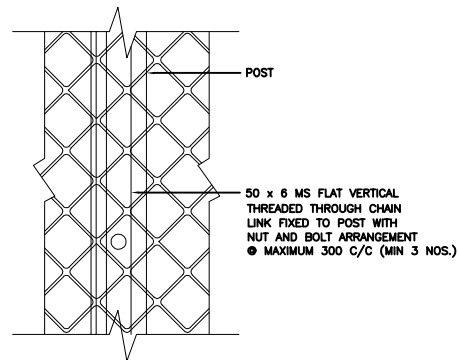
TYPICAL ELEVATION OF CHAIN LINK FENCE



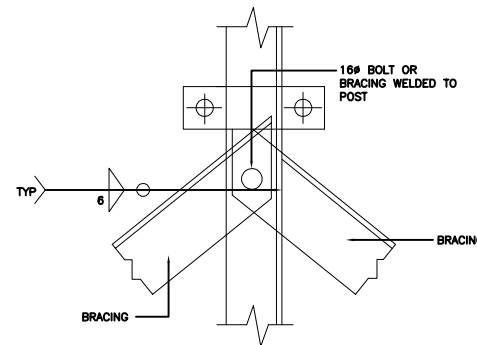
TYPICAL SECTION

NOTES:-


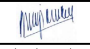
1. ALL DIMENSION ARE IN MM & LEVELS IN METERS.
2. ALL CORNER POST & STRAINER POST SHALL BE L65X65X5 AND INTERMEDIATE POST & BRACING SHALL BE L65X65X6.
3. STRAINING POST SHALL BE PROVIDED AT EVERY 50M C/C AND SHALL HAVE ONE STAY POST ALONG THE FENCING.
4. EVERY CORNER POST SHALL HAVE TWO STAY POST ALONG THE FENCING.
5. ALL WELD SHALL BE 6MM THK. UNLESS NOTED OTHERWISE.
6. THE CHAIN LINK FENCING AROUND SWITCHYARD SHALL BE OF MINI. 3.15MM DIAMETER AND OF MESH SIZE 50MM.
7. POST/BRACING/FLATS SHALL BE COATED WITH TWO OR MORE COATS OF APPROVED STANDARD MAKE ALUMINUM PAINT OVER A COAT OF STANDARD STEEL PRIMER.
8. POST EMBEDDED IN CONCERT SHALL BE OF MIX 1:3:6 U.N.O.
9. LEAN CONCRETE SHALL BE OF MIX 1:4:8 U.N.O.



FIXING OF CHAIN LINK FABRIC OVER POST



DETAIL-A

REV	DATE	DESCRIPTION	BY	CHKD.	APPD.
 <b>BHUTAN POWER CORPORATION LTD.</b> TRANSMISSION CONSTRUCTION DEPARTMENT					
<b>PROJECT :</b> CONSTRUCTION OF 66/33 KV SUBSTATION AT JAMTSHOLING, SIPS00					
<b>TITLE :</b> CHAIN LINK FENCING					
<b>REVISION / DRAWING :</b> 02/01/2021 DWG. NO.BPC/TCD/TPD/12-01/010-C/CHAIN LINK FENCE			<b>APPROVED :</b>  DATE : FEBRUARY 2021 SCALE : AS SHOWN		