

ESD, PHUNTSHOLING 33/11kV substation

LEGEND

SYMBOLS

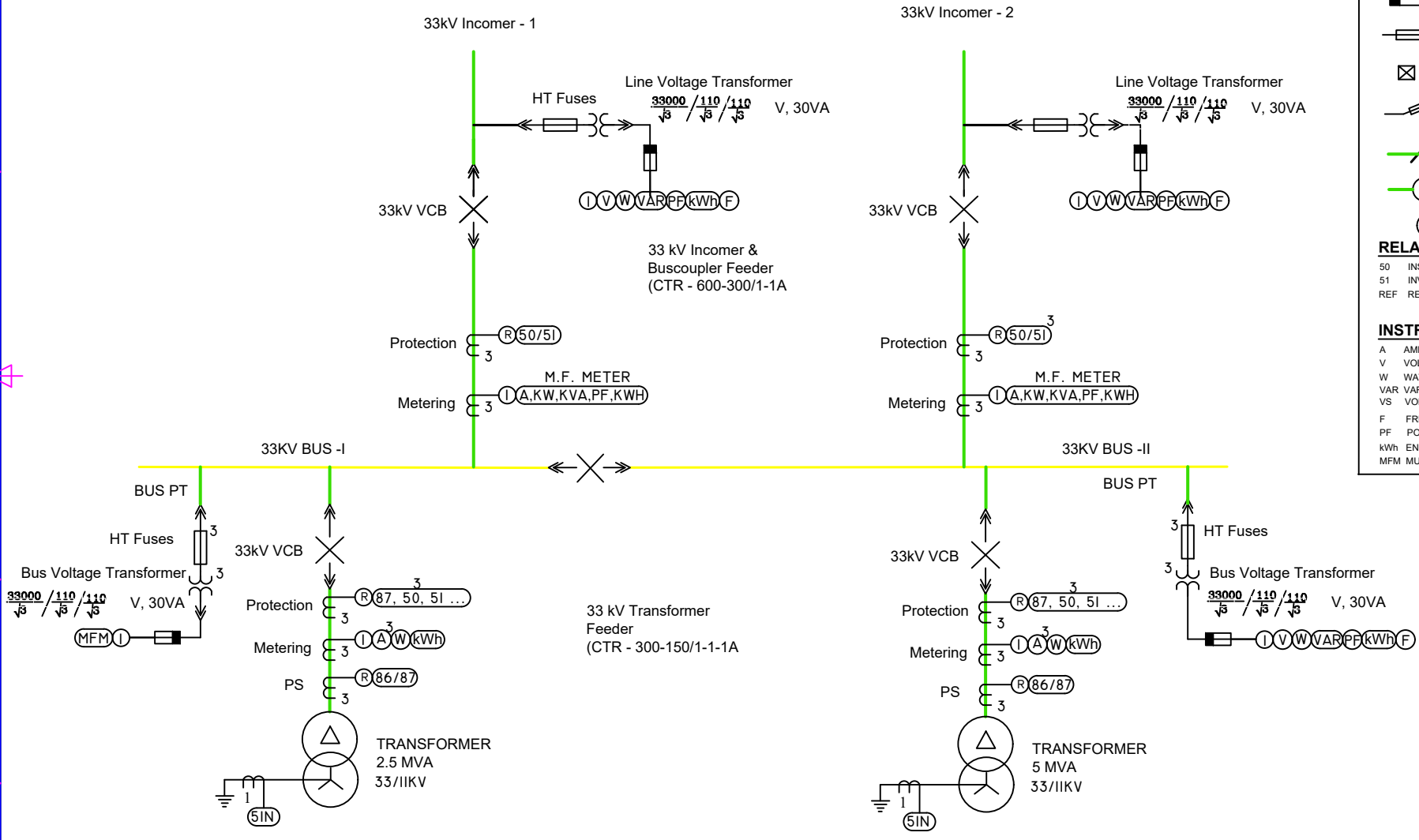
- VOLTAGE TRANSFORMER { FIG. INDICATES NO. OF CTs/VTs
- CURRENT TRANSFORMER { R-RELAYING
I-INSTRUMENTATION
- CIRCUIT BREAKER
- INSULATOR
- LIGHTNING ARRESTER
- FUSE (THICK LINE INDICATES SUPPLY SIDE)
- HT HRC FUSE
- AUTO-RECLOSER CIRCUIT BREAKER
- LBS WITH HT HRC FUSE
- GANG OPERATED AIR BREAK SWITCH
- TWO WINDING TRANSFORMER
- SOURCE (GENERATOR)

RELAYING

- 50 INSTANTANEOUS O/C RELAY
- 51 INVERSE TIME PHASE OVERCURRENT RELAY
- REF RESTRICTED EARTH FAULT RELAY

INSTRUMENTATION

- A AMMETER
- V VOLT METER
- W WATT METER
- VAR WATT METER
- VS VOLT METER SELESTOR SWITCH
- F FREQUENCY METER
- PF POWER FACTOR METER
- kWh ENERGY METER
- MFM MULTI FUNCTION METER



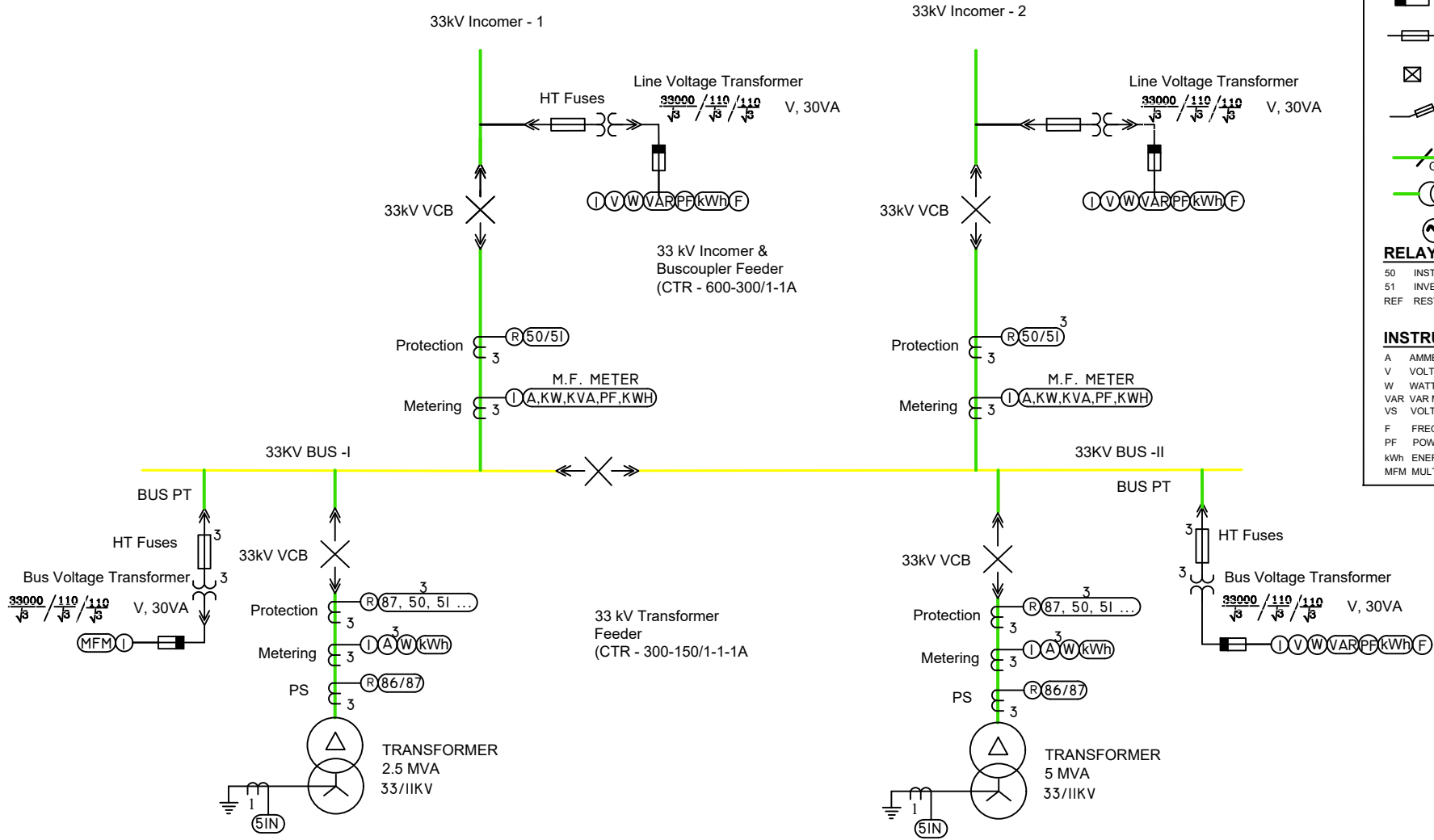
Note:
THIS SCHEMATIC IS NOT MEANT TO BE A DETAILED SPECIFICATION OF THE SUBSTATION. IT IS FOR ILLUSTRATION PURPOSE ONLY.

NOTE:	Title: PROPOSED SCHEMATIC FOR THE 33 KV GIS PANELS AT ESD, PHUNTSHOLING.		File Name:	Date: January 2023	Scale: NTS
	Division: Electricity Services Division PHUNTSHOLING	Bhutan Power Corporation Limited		Project: Contract Management Section Construction Division Procurement and Construction Department	Code:

ESD, PHUNTSHOING

GURUNGDARA, GEDU, PHUENTSHOLING

33/11kV substation



LEGEND

SYMBOLS

- VOLTAGE TRANSFORMER (FIG. INDICATES NO. OF CTS/VTs)
- CURRENT TRANSFORMER (R-RELAYING, I-INSTRUMENTATION)
- CIRCUIT BREAKER
- INSULATOR
- LIGHTNING ARRESTER
- FUSE (THICK LINE INDICATES SUPPLY SIDE)
- HT HRC FUSE
- AUTO-RECLOSER CIRCUIT BREAKER
- LBS WITH HT HRC FUSE
- GANG OPERATED AIR BREAK SWITCH (G/O)
- TWO WINDING TRANSFORMER
- SOURCE (GENERATOR)

RELAYING

- 50 INSTANTANEOUS O/C RELAY
- 51 INVERSE TIME PHASE OVERCURRENT RELAY
- REF RESTRICTED EARTH FAULT RELAY

INSTRUMENTATION

- A AMMETER
- V VOLT METER
- W WATT METER
- VAR VAR METER
- VS VOLT METER SELESTOR SWITCH
- F FREQUENCY METER
- PF POWER FACTOR METER
- kWh ENERGY METER
- MFM MULTI FUNCTION METER

Note:
THIS SCHEMATIC IS NOT MEANT TO BE A DETAILED SPECIFICATION OF THE SUBSTATION. IT IS FOR ILLUSTRATION PURPOSE ONLY.

NOTE:

Gurungdara, Gedu, Phuntsholing

Title: PROPOSED SCHEMATIC FOR THE 33 KV GIS PANELS AT Gurungdara, Gedu, Phuntsholing

Division: **Electricity Services Sub-Division GEDU**

Bhutan Power Corporation Limited

File Name:

Date: **January 2023**

Scale: **NTS**

Project: **Contract Management Section Construction Division Procurement and Construction Department**

Code: